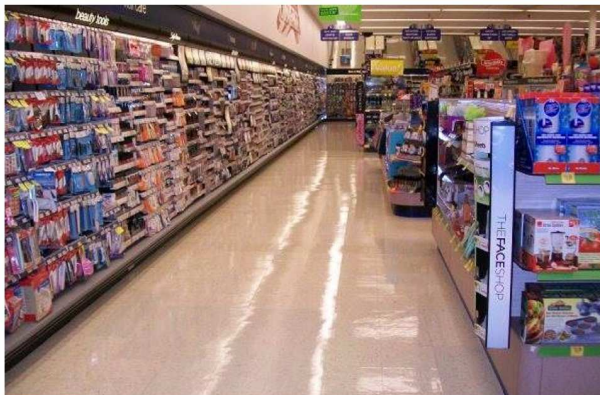


JFB Hart Coatings, Inc. Customer Pictures March 2014





JFB Hart Coatings, Inc.
10210 Werch Drive - Suite 203
Woodridge, Illinois 60517
Office: (630) 633-6228
Fax: (630) 633-6238
Website: www.jfbhartcoatings.com

© 2014 by JFB Hart Coatings, Inc.
JFB Hart Coatings, Inc. retains sole copyright to the
contributions of this book.



JFB HART COATINGS IS THE LEADING DEVELOPER AND MANUFACTURER OF ENVIRONMENTALLY FRIENDLY, WATER-BASED, SOLVENT-FREE URETHANE AND EPOXY COATINGS. With more than 100,000,000 sq. ft. of products applied, JFB Hart Coatings has provided next generation paints and coatings for superior protection to all indoor and outdoor applications. JFB Hart Coatings presents customers the ability to use sustainable and green products while enhancing performance characteristics.

JFB Hart Coatings continues to develop, specialize and enhance our technology to meet consumer requirements and to stay ahead of constantly evolving government regulations. In addition, JFB Hart Coatings continues to work with the South Coast Air Quality Management District (“SCAQMD”) of Southern California to ensure commercial availability of high performance, environmentally friendly paints and coatings in the marketplace that exceed the SCAQMD regulations.

Environmentally Friendly

Historically, relatively harsh petroleum-based solvents have been used for paints and coatings, thus resulting in coatings that are harmful to the environment. JFB Hart Coatings is changing the industry by providing environmentally friendly paints and coatings with attributes such as:

- *Low to Zero Volatile Organic Compounds (VOCs)*
- *LEED Credits (EQ. 4.2 Low Emitting Coatings)*
- *Low to No Odor*
- *Sustainable & Green*
- *Reduce Solid Waste, Water & Electrical Usage*
- *No Proposition 65 Chemicals*

JFB Hart Coatings is reshaping the industry by delivering three key features in a single product: 1) outstanding protective performance characteristics, 2) low to zero VOCs in solvent-free formulations and 3) Microbial Antimicrobial Protection Additives to inhibit the growth of microorganisms such as bacteria, mold and mildew.

Industrial Maintenance

JFB Hart Coatings has developed industrial maintenance products that have protective properties that are formulated to withstand extreme conditions. These products include HP-105, HP-1K, HP-300 Matte, HP-300 Satin and HP-330. JFB Hart Coatings products provide many benefits to the consumer, including:

- *Eliminates Labor Steps*
- *Less Coats & No Primer Required*
- *Excellent Bonding Capabilities*
- *Ultraviolet Insensitivity*
- *Anti-Graffiti Systems*

The Industrial Maintenance Products are used in theme parks, sports arenas, warehouses, building interiors and exteriors, roofs, waste water facilities, healthcare, education, anti-graffiti systems, transportation facilities, food / beverage / pharmaceutical plants, airports and train stations, hospitality, restaurants, wineries and many more locations.

Ultra Durable Floor Care

JFB Hart Coatings has been the industry leader in manufacturing Ultra Durable Floor Care Products for the facilities maintenance industry. These products include GlossTek™, GlossTek™ Fast Dry, MatteTek™, SatinTek™ and VersaTek™.

JFB Hart Coatings products replace a half century old acrylic finish technology. Our Ultra Durable products provide many benefits to the consumer, including:

- *Reduces Floor Care Costs by 50-90%*
- *Eliminates Burnishing, Stripping and Scrub & Recoats*
- *Superior Durability and Chemical / Abrasion Resistance*
- *Overall Better Protection for Floors*

The Ultra Durable Products are used in facilities spanning healthcare, education, retail, office buildings, government, airports and train stations, theme parks, restaurants, sports arenas, churches, hospitality, restaurants, prisons, kitchens, gymnasiums, and many more.

Specialty Products & OEM Applications

The versatility of JFB Hart products enable them to be used in a wide variety of applications in specialty / OEM markets. JFB Hart Coatings has either developed or enhanced existing products based on customer requests for specific applications, including:

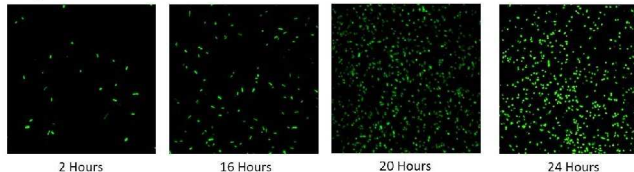
- *A UV cured product for use with vinyl flooring manufacturers to coat in the factory.*
- *Antimicrobial products to inhibit the growth of microorganisms such as bacteria, mold and mildew.*
- *Industrial transport / vehicle applications for OEM and aftermarket to deliver extreme durability and performance.*
- *Products used for tables, countertops and furniture that withstand household chemicals, wear and tear.*
- *Residential and commercial construction products such as decks, roofs and sidings.*

Antimicrobial Product Protection

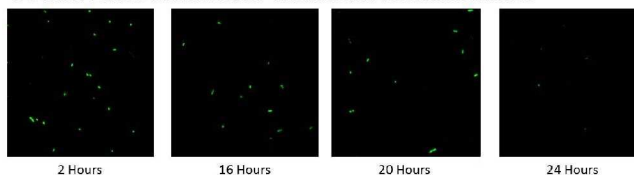
JFB Hart has partnered with Microban® Antimicrobial Product Protection to provide the most innovative coatings with antimicrobial protection. Microban® technology is built-in to JFB Hart products during the manufacturing process and becomes an intrinsic part of the product inside and at the surface. When microbes, such as bacteria, mold and mildew that can cause stains, odors and product deterioration come in contact with the product surface, Microban protection penetrates the cell wall of the microbe so the microbe cannot grow or reproduce.



Unprotected Surface



JFB Hart Products with Microban® Antimicrobial Protection Additives



This information is based upon standard laboratory tests and is provided for comparative purposes to substantiate antimicrobial activity for non-public health applications. Microban technology is not designed to replace good hygiene practices or protect users from disease causing microorganisms. Antimicrobial action limited to product surface.

Industrial Maintenance

Industrial maintenance coatings are high performance coatings formulated for application to substrates exposed to one or more of the following extreme environmental conditions:

- Immersion in water, wastewater, or chemical solutions (aqueous and non-aqueous solutions), or chronic exposures of interior surfaces to moisture condensation;
- Acute or chronic exposure to corrosive, caustic, or acidic agents, or to chemicals, chemical fumes, or chemical mixtures or solutions;
- Repeated exposure to temperatures above one hundred twenty-one degrees Celsius (two hundred and fifty degrees Fahrenheit);
- Repeated (frequent) heavy abrasion, including mechanical wear and repeated (frequent) scrubbing with industrial solvents, cleansers, or scouring agents; or
- Exterior exposure of metal structures and structural components.

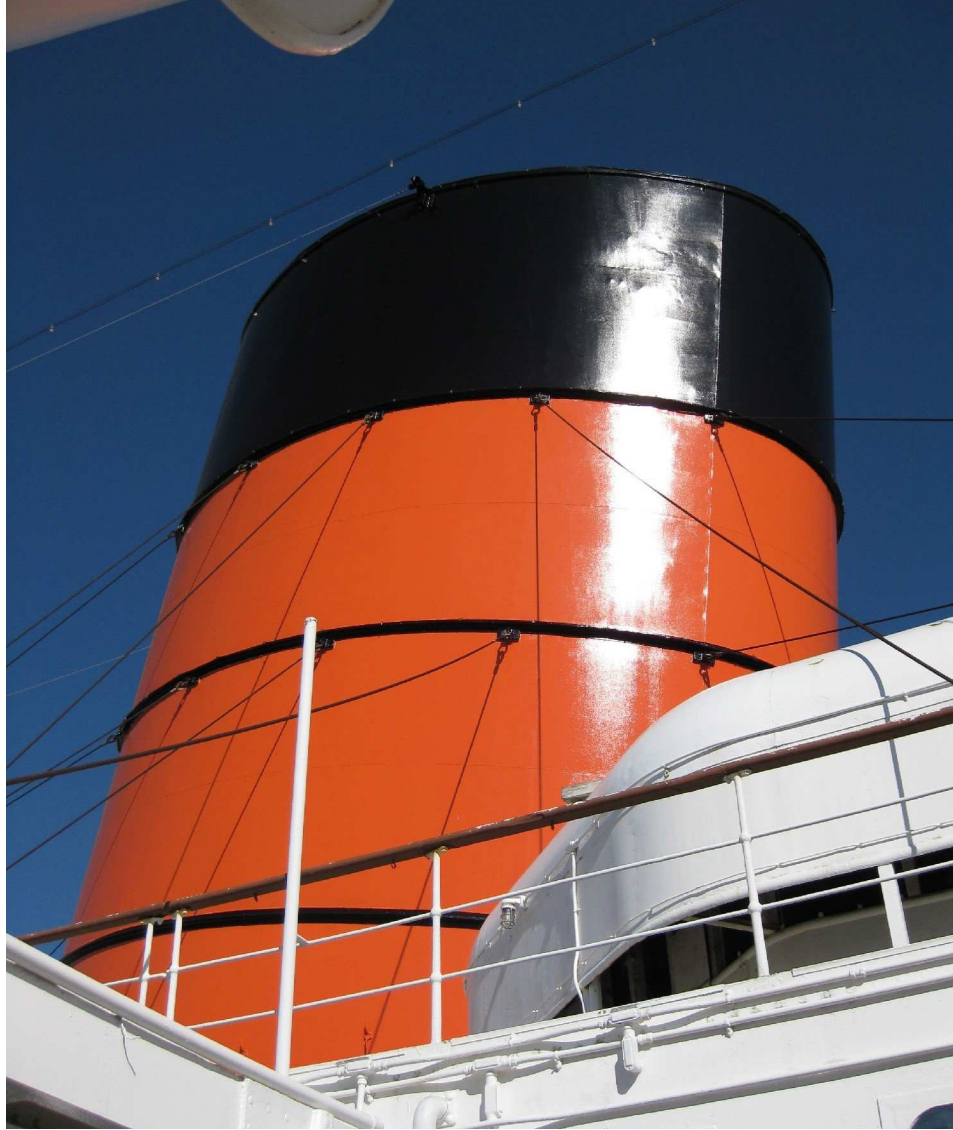
Product	Description	Components	Air Dry Times	VOCs	Sheens	Clear / Color
HP-105	High performance, water-based, aliphatic urethane	2	8 hours	<30 g/l	Gloss (>85°)	Both
HP-300 Matte / Satin	High Performance, water-based, acrylic urethane	2	8 hours	<50 g/l	Matte (25°) Satin (55°)	Both
HP-1K	High performance, water-based, aliphatic urethane	1	< 30 min	<100 g/l	Gloss (80°) Satin (55°) Matte (25°)	Both
HP-330	High build, 100% solids, solvent free, self-leveling epoxy	2	8-12 hours	0 g/l	Gloss (>85°)	Both
HP-200 Corrosion Resistant Epoxy Primer	High performance, water-based, epoxy primer	2	2-3 hours	<60 g/l	n/a	Gray or Red Oxide

Key Performance Attributes

- Direct to substrates including metals
- Eliminates labor steps - Less coats are required
- Excellent bonding capabilities
- Anti-graffiti and dry-erase board systems
- Excellent chemical, abrasion, stain and impact resistance with high flexibility

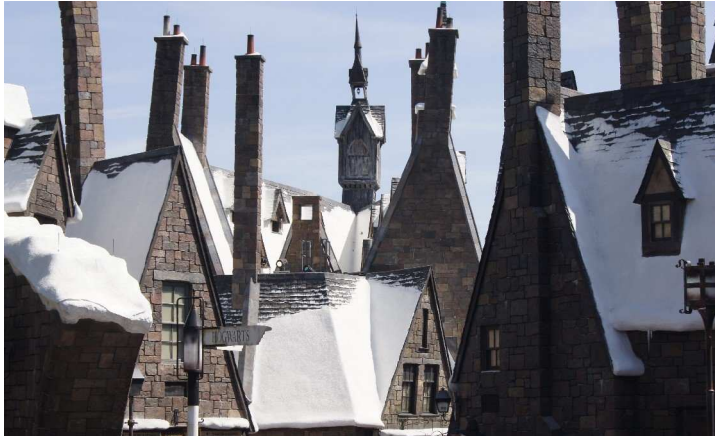
Markets	Locations	Substrates
---------	-----------	------------

- | | | |
|--|--|---|
| <ul style="list-style-type: none"> • Theme Parks • Food Plants • Warehouses • Factories • Hospitality • Transportation | <ul style="list-style-type: none"> • Floors & Walls • Interior/Exterior • Roofs • Direct to Metal • Structures • Furniture | <ul style="list-style-type: none"> • Concrete • Metal • Wood • Fiberglass • Painted Surfaces |
|--|--|---|



Queen Mary - Long Beach, CA

The HP- 105 Red & Black were coated on the smokestacks. JFB received a certificate of recognition from the City of Long Beach for providing low VOC products for this application.

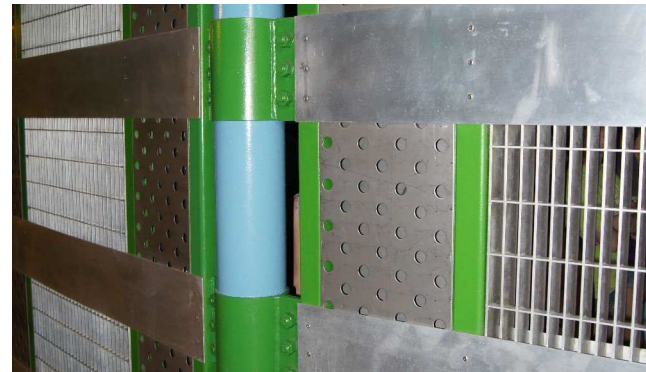
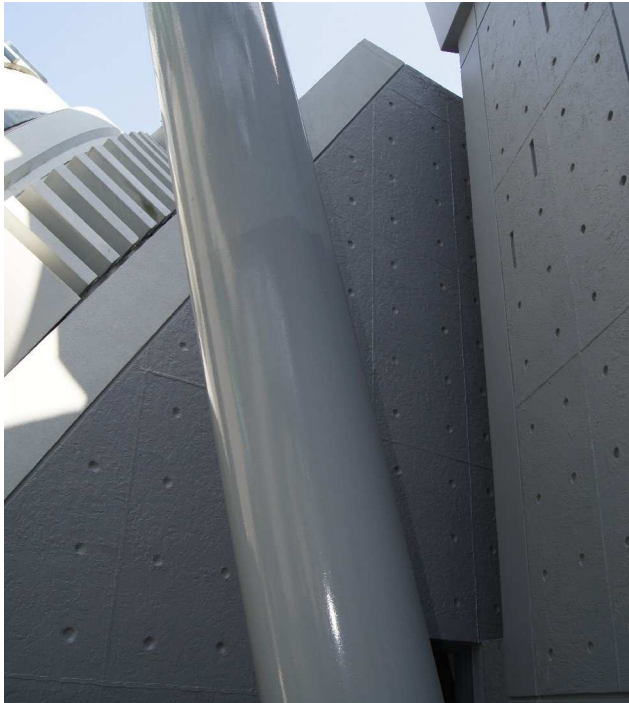
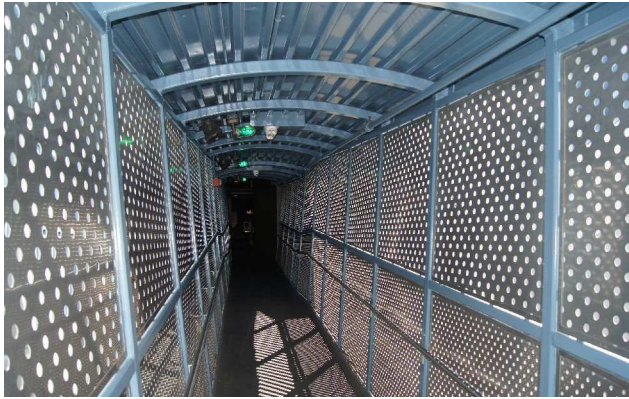


Harry Potter - Universal Studios - Orlando, FL
HP-105 White applied to the urethane foam roof.



Butterbeer Vending Cart - Universal Studios - Orlando, FL

The HP-300 Matte Clear was applied to the vending cart at the Harry Potter exhibit to protect the weathered / rustic look.



The Hulk Roller Coaster - Universal Studios - Orlando, FL
The HP-105 Green, Blue & Gray was applied to various parts of the steel ride.



Main Street USA Store Front - Walt Disney World - Orlando, FL
The HP-105 Clear was applied to store fronts on Main Street USA to protect from hand oils, sunscreen and sweat.



Kouzzina by Cat Cora Restaurant - Walt Disney World - Orlando, FL
The HP-300 Satin applied to the wooden tables.



Jungle Cruise - Walt Disney World - Orlando, FL

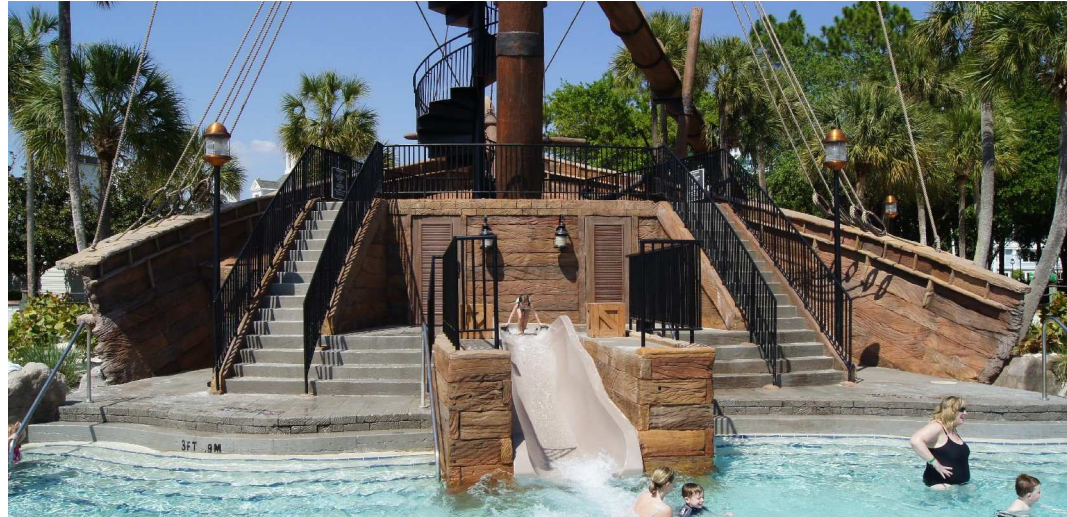
The HP-105 Clear was applied on the inside of the fiberglass boats to increase the durability and life of the under coat.



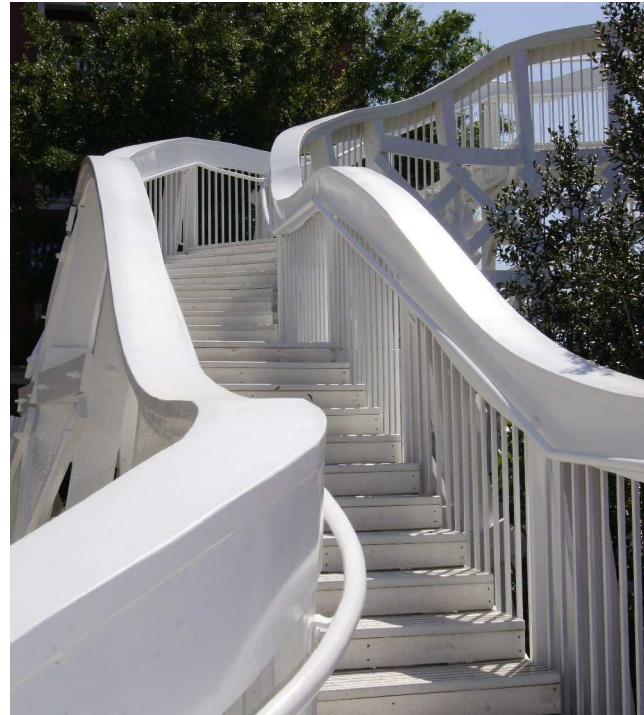
Tables at Magic Kingdom - Walt Disney World - Orlando, FL
The HP-105 Clear was applied to these tables to protect the rustic / weathered look.



ESPN Wide World of Sports - Walt Disney World - Orlando, FL
The HP-105 Green applied to the metal fence.



Shipwreck - Walt Disney World - Orlando, FL
HP-105 Clear was applied to the floor of the largest waterslide at Disney World properties.



Roller Coaster Water Slide - Walt Disney World - Orlando, FL
The HP-105 White was applied to the wood structure.



Rock Walls at Magic Kingdom - Walt Disney World - Orlando, FL

Disney hired artists to create the weathered appearance of these rocks. Disney then applied the HP-300 Satin Clear to protect the work done by these artists.



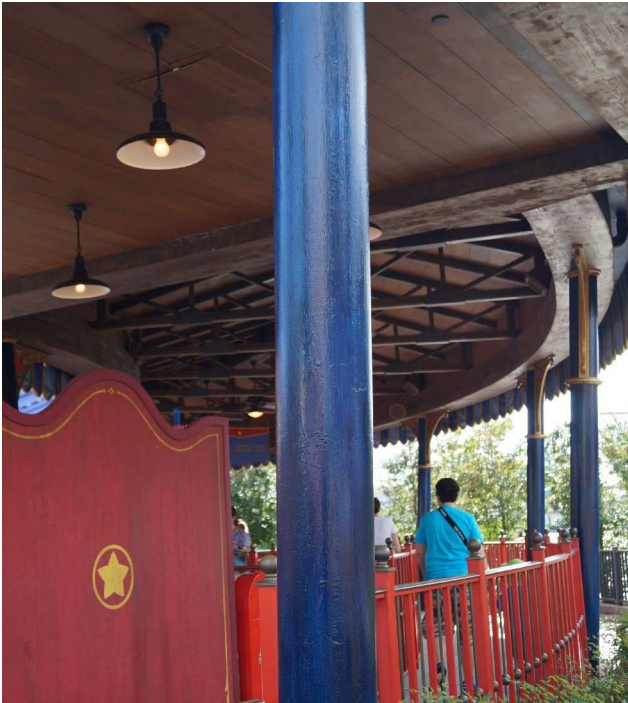
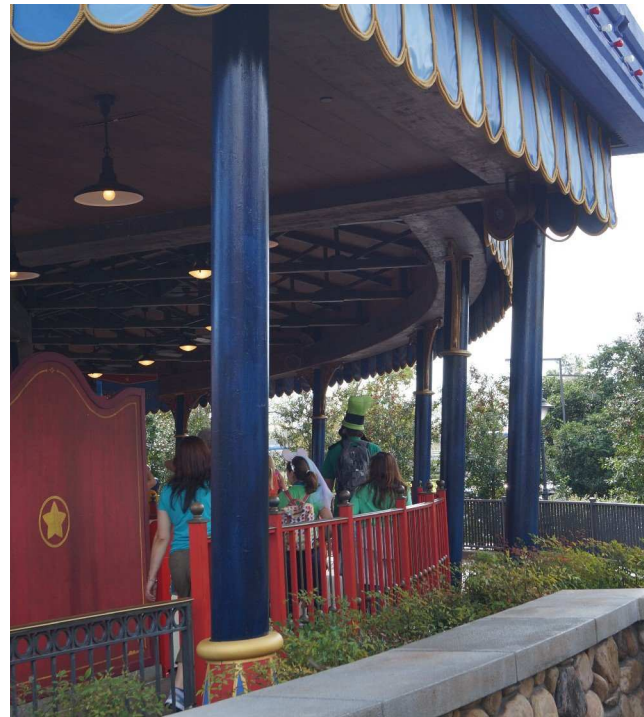
Handrails - Walt Disney World - Orlando, FL

The HP-105 Green is being applied to hand rails throughout the park. The coating holds up to all hand oils, sunscreen and sweat.



Walt Disney World - Orlando, FL

The HP-105 Black was applied to steel handrails and fences around the park and resorts.



Dumbo The Flying Elephant - Walt Disney World - Orlando, FL
The HP-300 Satin Clear was applied as a top coat over the blue for all metal poles at this ride.



Hoops Hotel - Walt Disney World - Orlando, FL
The HP-105 Clear applied to all the fiberglass basketballs.



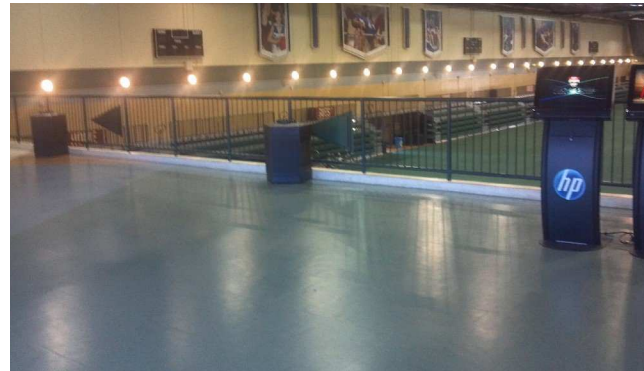
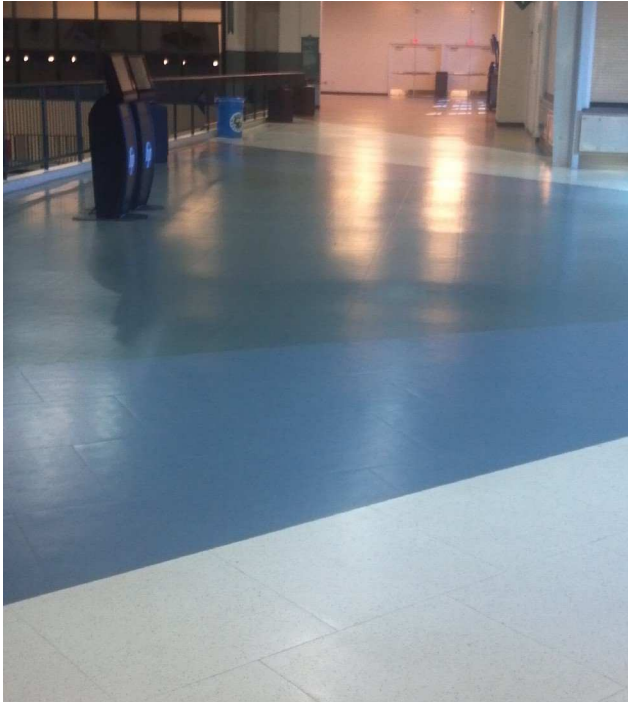
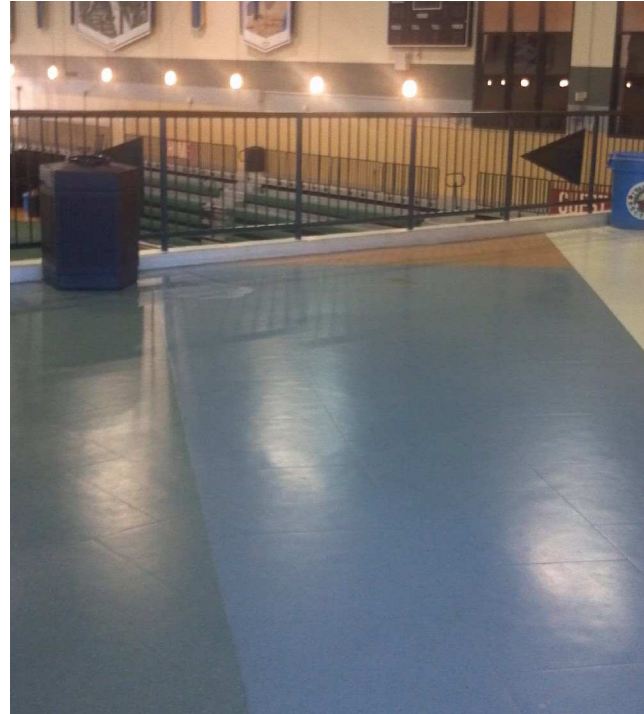
One Man's Dream - Walt Disney World - Orlando, FL
The HP-105 Clear was applied to the steel window casings.



Fantasia Gardens Mini Golf - Walt Disney World - Orlando, FL
The HP-105 Clear was applied as the top coat to this decorative fountain.



Fantasia Gardens Hotel - Walt Disney World - Orlando, FL
The HP-105 Clear was applied as a top coat to wood throughout the hotel.



HP Pavilion - Walt Disney World - Orlando, FL

The HP-105 Clear with GripLok was applied to the concourse floor in the pavilion to protect the substrate and increase the slip resistance.



Roller Coaster Pre-Fab

HP-105 Green & Blue applied to the steel structure at a job site and then shipped to the amusement park to be assembled.



Batman Roller Coaster - Six Flags Magic Mountain - California
The HP-105 Black & Blue was applied to the structural steel.



Superman Roller Coaster - Six Flags Magic Mountain - California
The HP-105 Blue was applied to the structural steel.



Goliath Roller Coaster - Six Flags Magic Mountain - California
The HP-105 Blue & Orange applied to the structural steel.



Taboo Tower - Six Flags Hurricane Harbor - California
The HP-105 Black applied to the fiberglass waterslide.



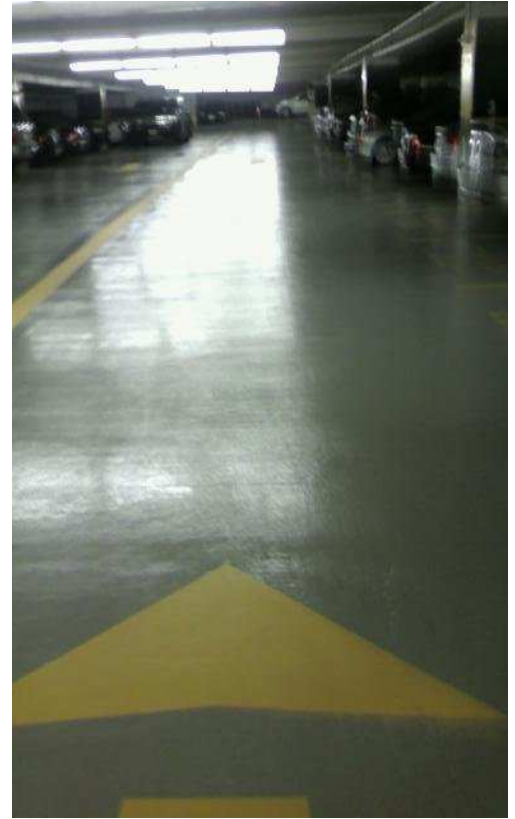
Industrial Equipment - Bottom Dump Trailer - Ontario, OR

The HP-105 White was applied to the interior and exterior of the trailer that is used to haul gravel to build roads. The customer and city were so pleased with the coating that they have applied the product to all other garbage and trailer type trucks in the town. Customer quote: "Nothing sticks to the HP-105" and "After months of use it still looks good as new! Not a scratch on it!"



Exterior Parking Garage - New Jersey

The HP-105 Beige was applied to the structural steel and metal panels that hold the solar panels together.



Multi-Level Parking Garage - San Francisco, CA

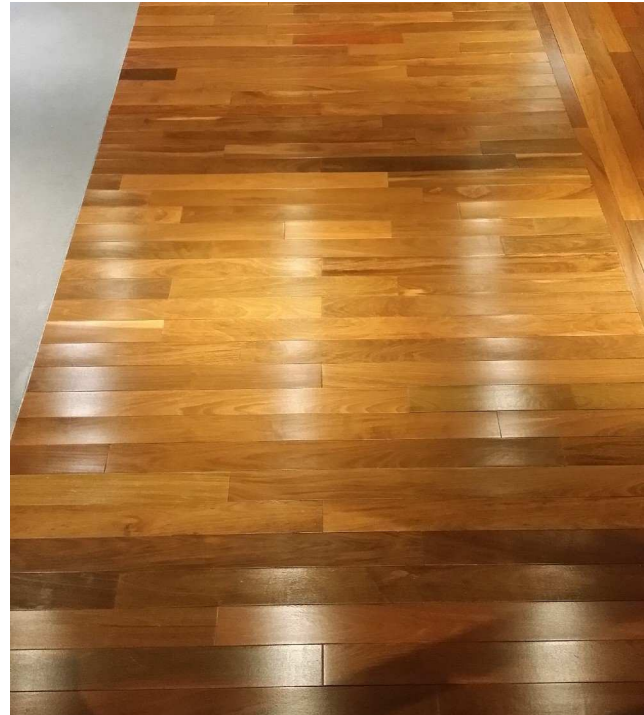
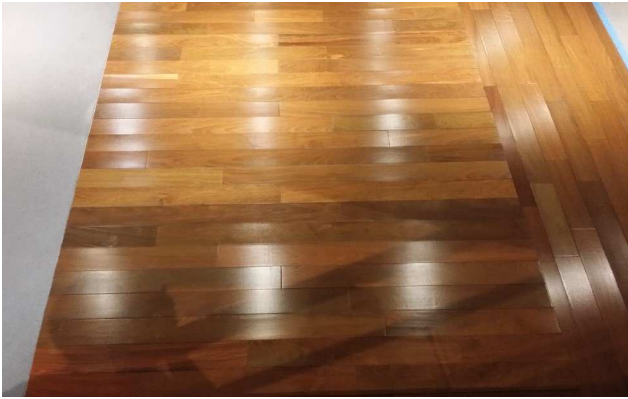
The HP-105 Gray was applied to the concrete garage to protect against high wear and tear auto traffic.



Voltran - Volusia County Transit Authority - Florida
The HP-105 Gray & Yellow applied to concrete floors at the bus terminal.



Datilera Del Desierto - Mexico
HP-105 Gray applied to the concrete floor of a food processing plant.



Kraft - Northfield, IL
The HP-300 Satin was applied to wood floors.



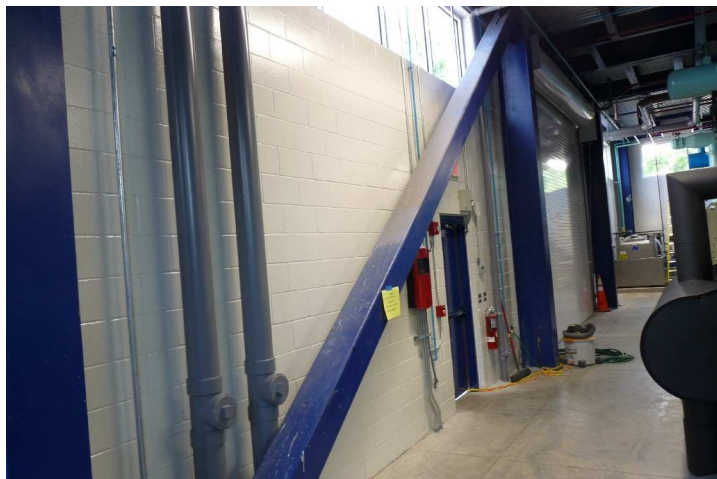
Bistro Jeanty - Napa Valley, CA

The HP-105 Red was applied to this restaurant's wooden floor. The HP-105 Clear was applied as the top coat.



Airplane Hangar

The HP-105 Gray was applied to a concrete floor for a personal airplane hangar.

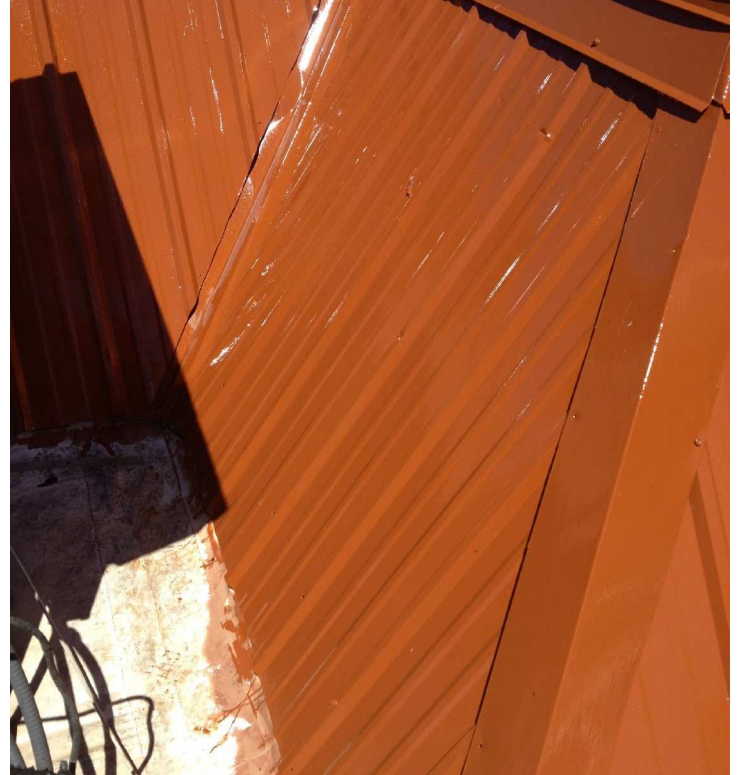


Various HP-105 colors applied to structural steel and piping.



Metal Pre-Fab Shop - Florida

Applied HP-105 Gray on structural steel for use on sign posts and a pedestrian bridge.



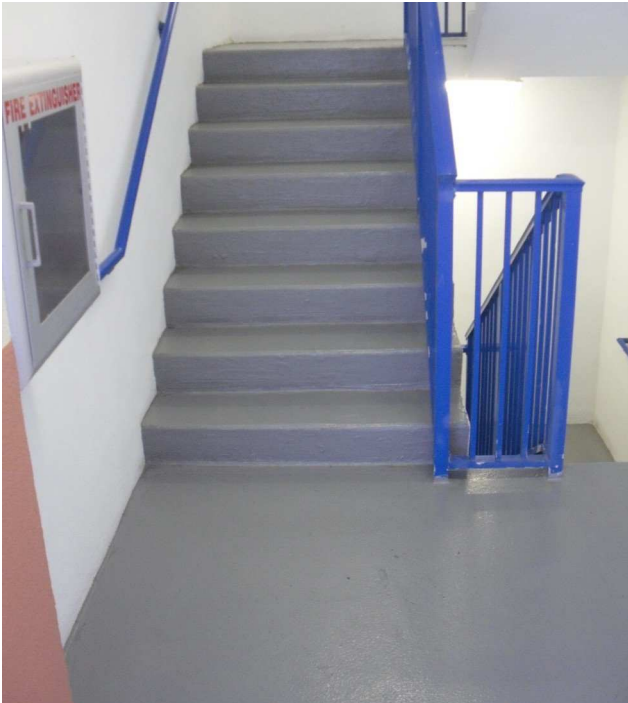
Texas Cattle Co. Restaurant - Florida
The HP-105 Brown was applied to the metal roof.



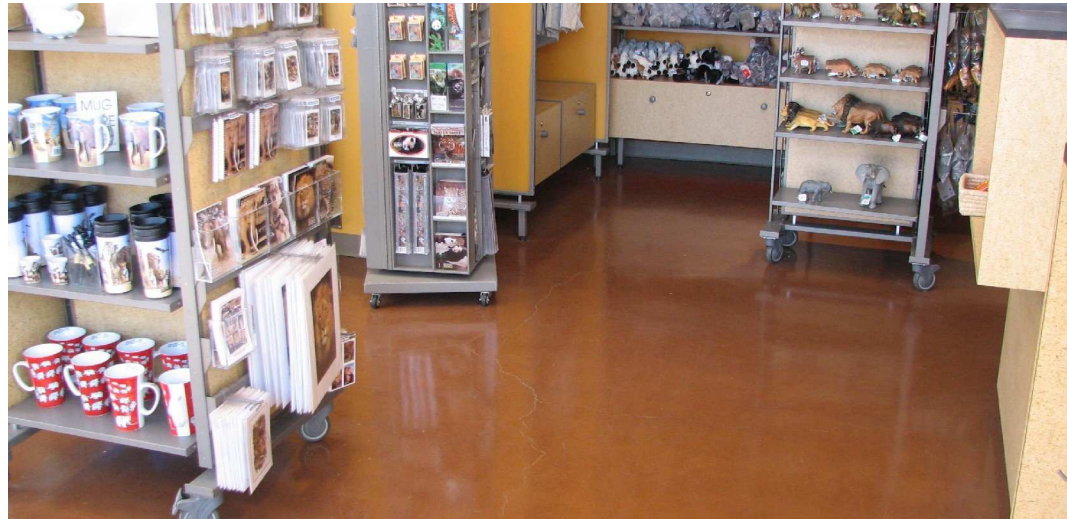
O'Hare International Airport - Chicago, IL
HP-105 Gray & Clear applied on concrete in the Kiss & Fly station.



Condominium Complex - Florida
HP-105 White applied to the staircases.



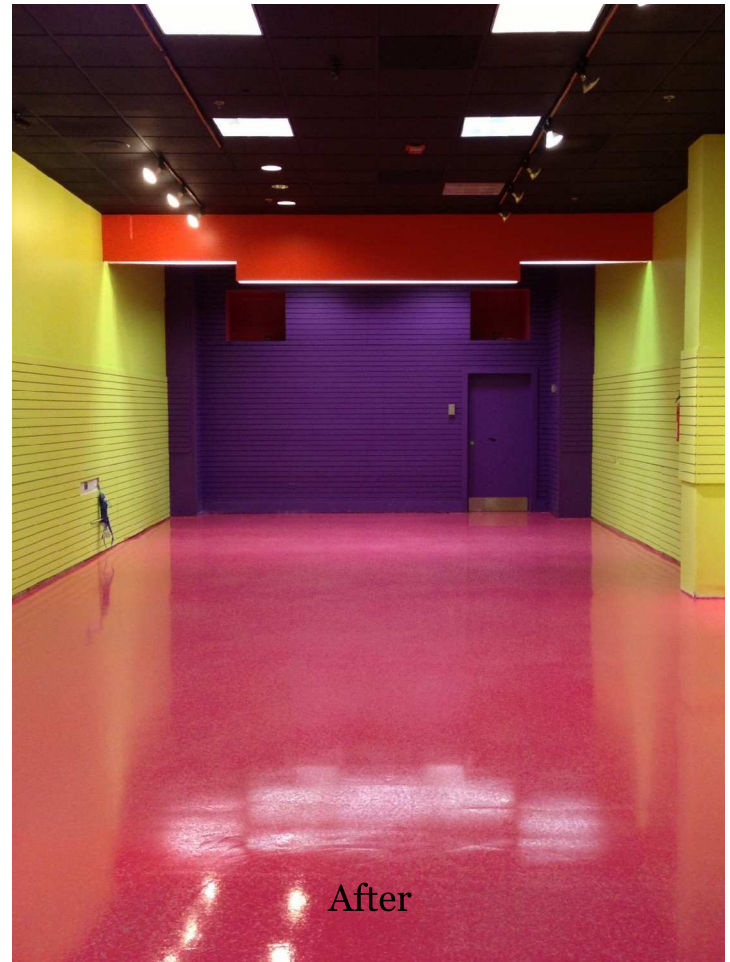
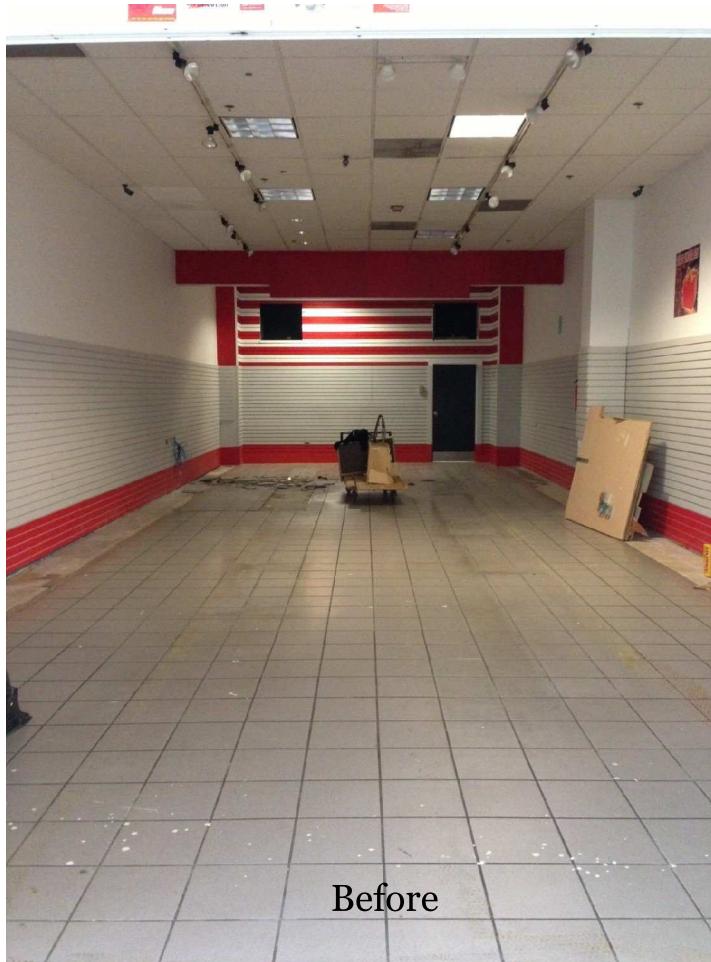
Condominium Complex - California
The HP-105 Gray was applied to the concrete walkways.



San Diego Zoo - San Diego, CA
The HP-105 Clear was applied over a stain on concrete in the cafeteria and gift shop.



HP-105 applied to various concrete garage floors.



Sweet & Sassy - Lombard, IL

The ceramic tile was torn up and then the HP-105 Pink was applied to the concrete floor with fluorescent color vinyl flakes.



Omni Hotel Restaurant - Orlando, FL

The HP-300 Satin was applied to the concrete floor of a restaurant at the hotel.

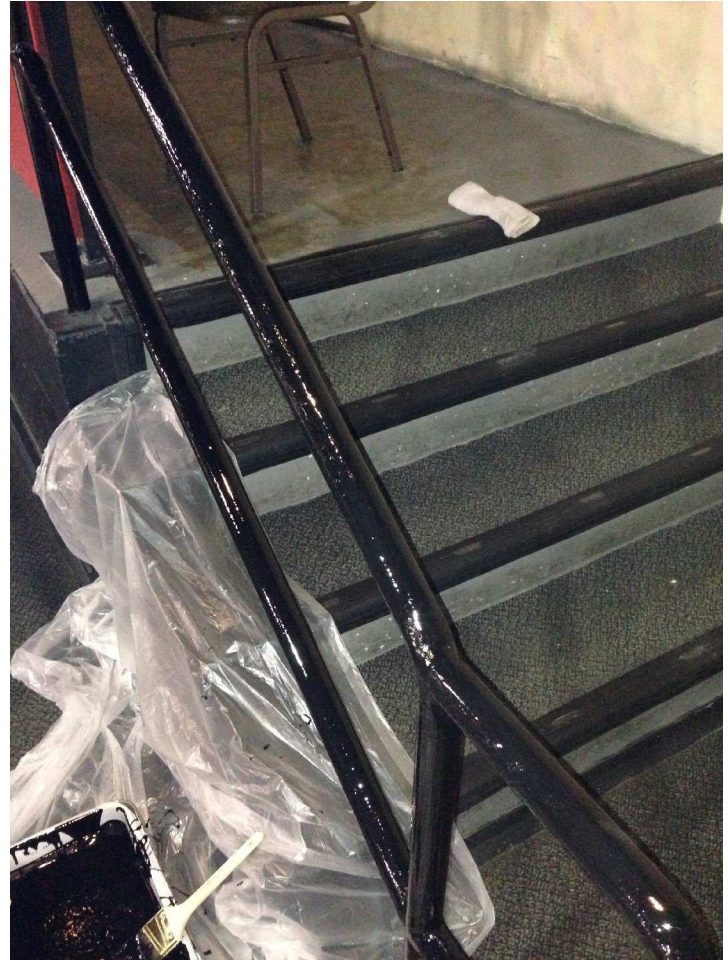


The Villages - Florida

The HP-330 Epoxy was applied to concrete bathroom floors with a quartz broadcast into the finish. The HP-105 was applied as a clear top coat, as well as a top coat to the wood.



Mercedes Benz Dealership - Florida
The HP-105 Blue was applied to all metal poles at the dealership.

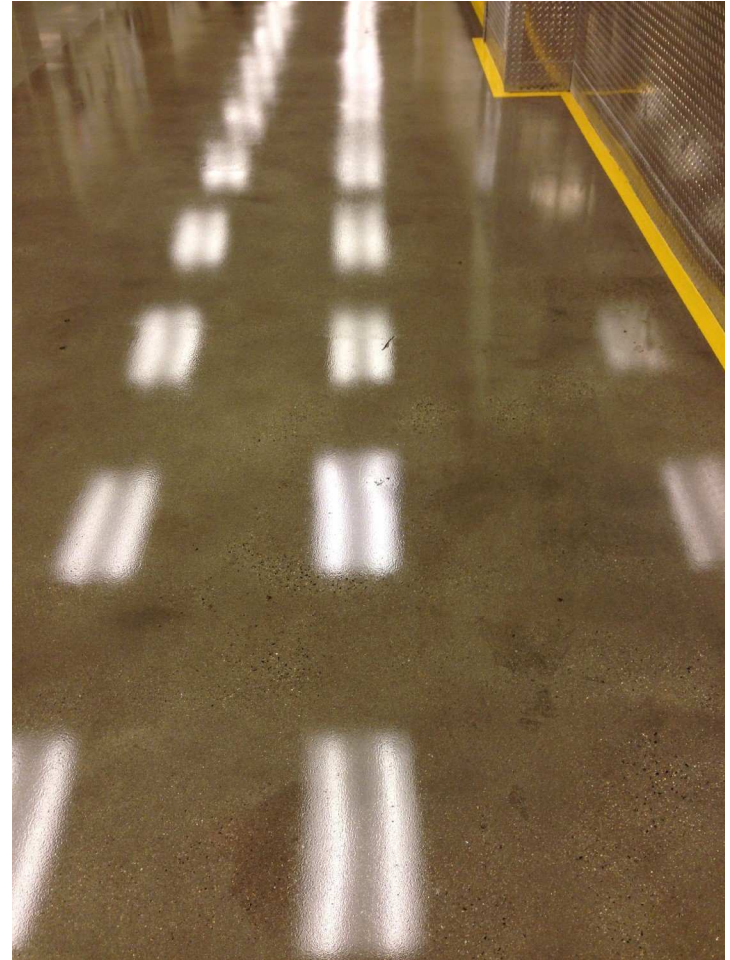


Medieval Times - Washington, DC
The HP-105 Black was applied to the metal handrails.



University of Texas Arlington - Mechanical Room Floor

The HP-105 Gray was applied after the prior epoxy coating did not maintain an adequate appearance. The HP-105 gave the floor a clean appearance that was raved about by the maintenance director.



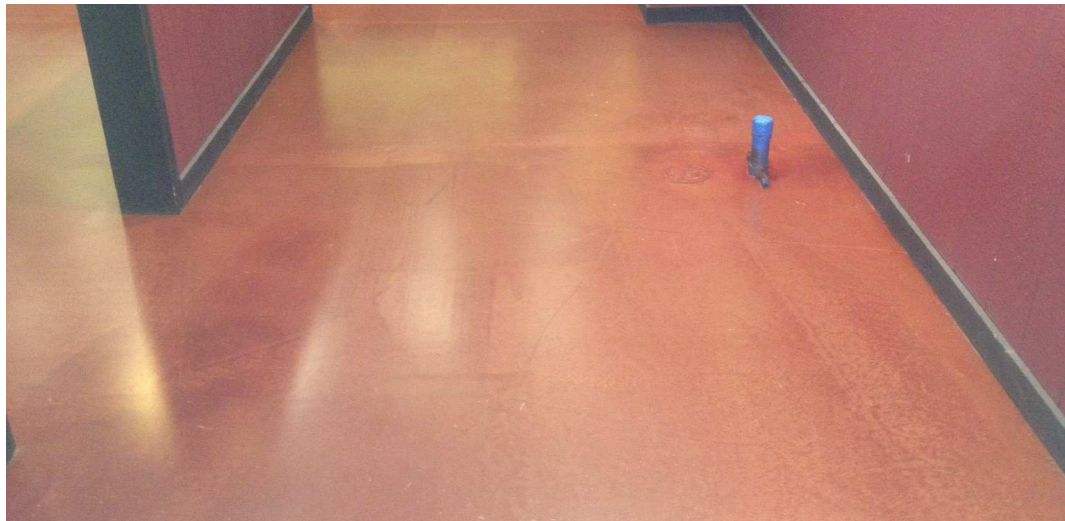
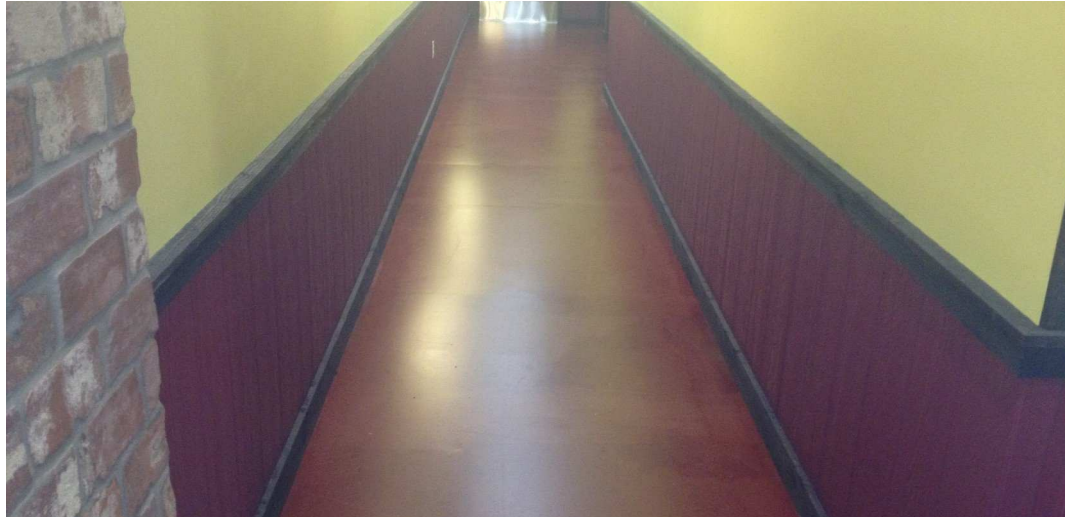
Gaylord Hotel - Washington, DC

The HP-105 Clear was applied to the vanity sink and concrete floor at this hotel.



Equipment Manufacturing Warehouse - Arkansas

A one coat system of the HP-105 Gray is being applied to the concrete floor (total of 300,000 sq. ft. to be coated).



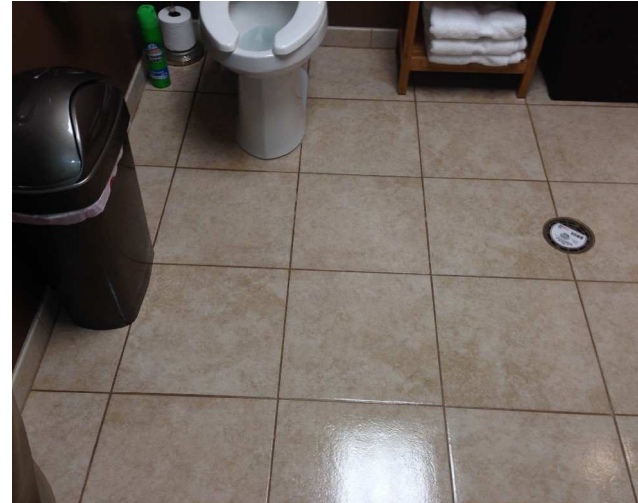
Voodoo BBQ & Grill - Miami, FL
The HP-300 Satin Clear was applied to stained concrete.



Refinery Restaurant - Chicago, Illinois
The HP-105 Clear was applied to a stained concrete floor.



Church - Lisle, IL
The HP-105 Clear was applied to bare concrete.



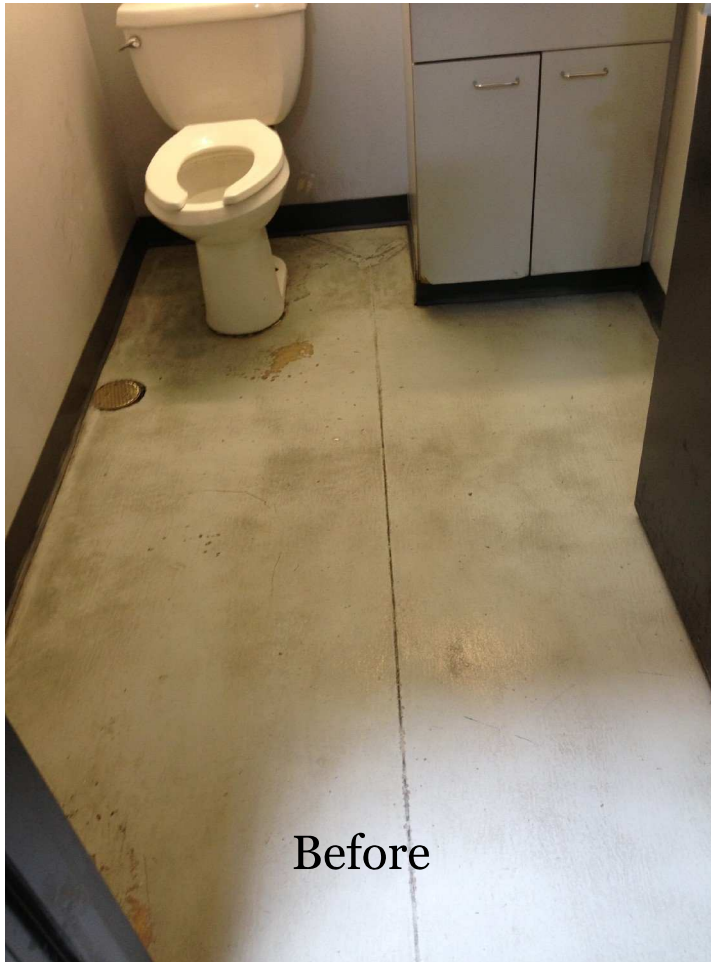
Body Dynamics Fitness Center - Westmont, IL

The HP-105 White & Red was applied to the walls. The HP-105 Clear with Adhesion Plus was applied to the ceramic tile in the restrooms.

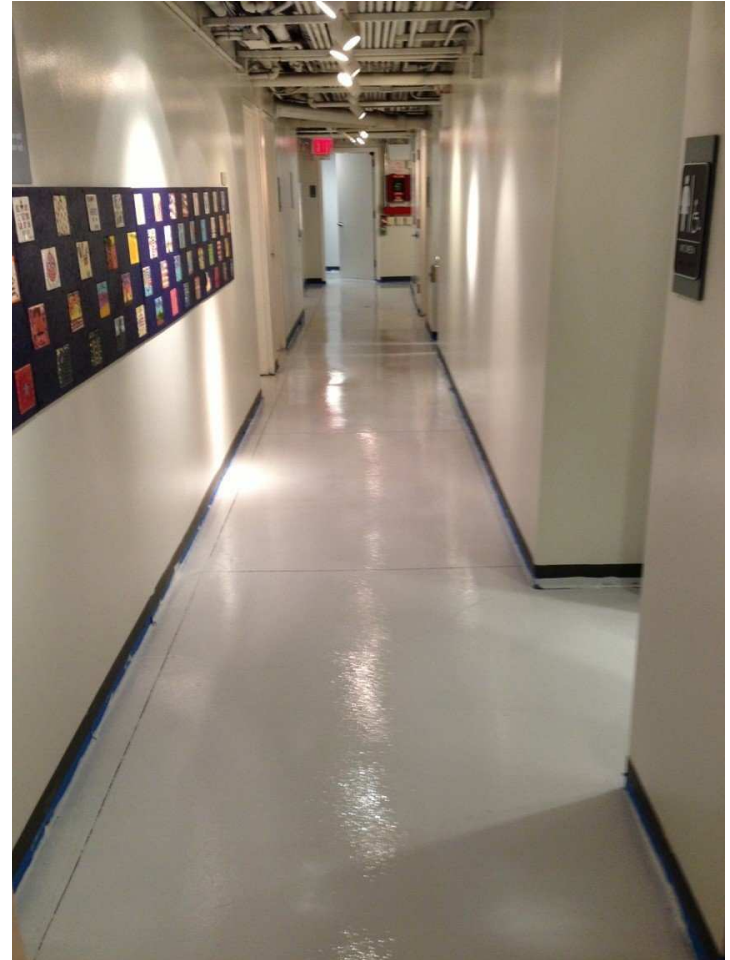


Hangar Clippers - Woodridge, IL

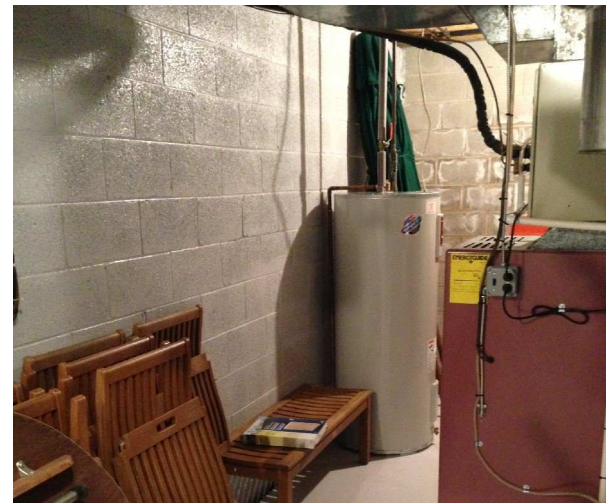
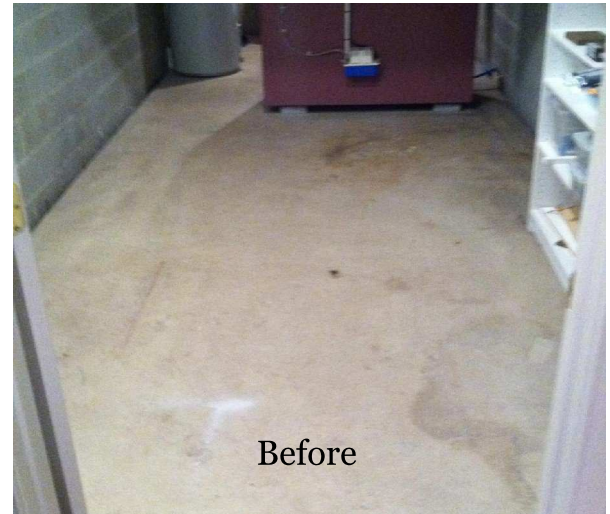
The HP-105 Black was applied to the concrete floor of this hair salon.



Commercial Warehouse Restroom
The HP-105 Gray was applied to the concrete floor in this restroom.



9/11 Family Tribute Center - New York City, NY
The HP-105 Gray was applied to the concrete floor at the family tribute center.



A homeowner coated their basement floor and walls with the HP-105 Gray.



Boat Refurbishment

The HP-105 Green & Clear was applied to the interior and exterior of these boats.



Marine Showroom - Tampa, FL
The HP-330 Gray was applied to a concrete floor.

Ultra Durable Floor Care

Ultra Durable Floor Care products are used on any substrate where conventional floor finish is typically applied. Such substrates are ordinarily subject to frequent (e.g., daily, weekly, monthly or quarterly) burnishing, polishing, and refinishing.

The Ultra Durable Floor Care products are used on the following substrates: vinyl composition tile, vinyl sheeting, luxury vinyl tile, vinyl asbestos, rubber, linoleum, vinyl sports floors, factory urethane's, terrazzo, poured urethane floors, ceramic, stone, wood gymnasium floors, cork, porcelain, slate, marble and quarry.

Product	Number of Components	Dry Time	Pot Life	Gloss Level	Approx. Sq. Ft. Per Gallon	VOCs
GlossTek	3	8 hrs.	90 min	Gloss (>85°)	400	<30 g/l
GlossTek Fast Dry	3	4 hrs.	45 min	Gloss (>85°)	350	<50 g/l
MatteTek	3	6-8 hrs.	90 min	Matte (25°)	350	<50 g/l
SatinTek	3	6-8 hrs.	90 min	Satin (55°)	350	<50 g/l
VersaTek	3	6-8 hrs.	90 min	Gloss (>85°)	350	<20 g/l

Key Performance Attributes

- Reduces floor care costs by 40-80%
- Eliminates burnishing, buffing, stripping and scrub and recoats
- Superior durability, chemical and abrasion resistance
- Long lasting and overall better protection for floors
- Increased slip co-efficient of friction
- Reduces labor while maintaining an excellent appearance

Markets Locations Substrates

- | | | |
|------------------|---------------|---------------|
| • Healthcare | • Lobbies | • VCT & Vinyl |
| • Education | • Hallways | • Sheeting |
| • Retail | • Bathrooms | • Terrazzo |
| • Hospitality | • Kitchens | • Ceramic |
| • Government | • Gymnasiums | • Wood |
| • Transportation | • Other Rooms | • Concrete |



Sweet & Sassy - Oak Brook, IL

This retail store coated their VCT floors using the VersaTek Clear. The customer said the VersaTek, "Brought new life into the floors!"



Great Lakes Naval Base - North Chicago, IL
The GlossTek Fast Dry was applied on the Terrazzo flooring.



O'Hare International Airport - Chicago, IL
The GlossTek Plus MB is being applied into the bathrooms at O'Hare airport on Terrazzo flooring.



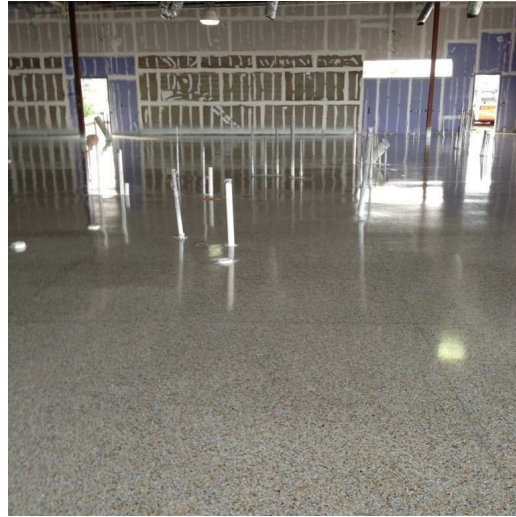
Midway Airport - Chicago, IL
GlossTek Fast Dry applied to the Terrazzo bathroom floors.



Denver International Airport - Denver, CO
The GlossTek was applied to their Terrazzo bathroom floors.

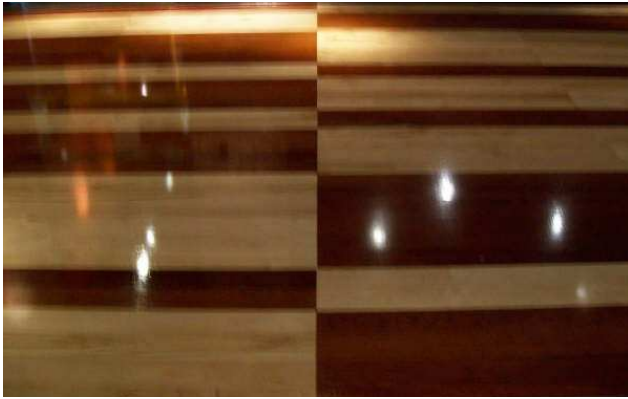


Walgreens - Ohio
The GlossTek Fast Dry was applied to VCT throughout multiple stores.



Wawa Convenience Store - Tampa, FL

The GlossTek Fast Dry was applied to the terrazzo floor during construction of this convenience store.



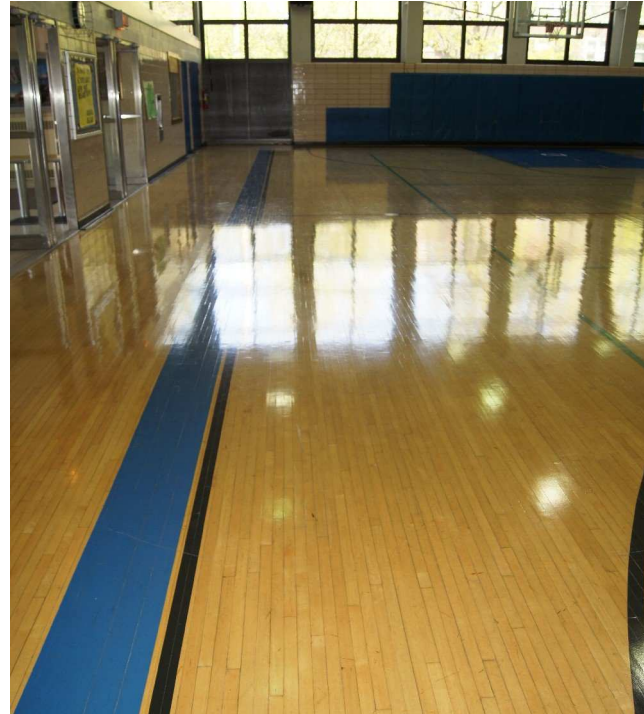
BJ's Restaurant & Brewhouse - Las Vegas, NV
The GlossTek was applied to the wood and slate floors in the restaurant.



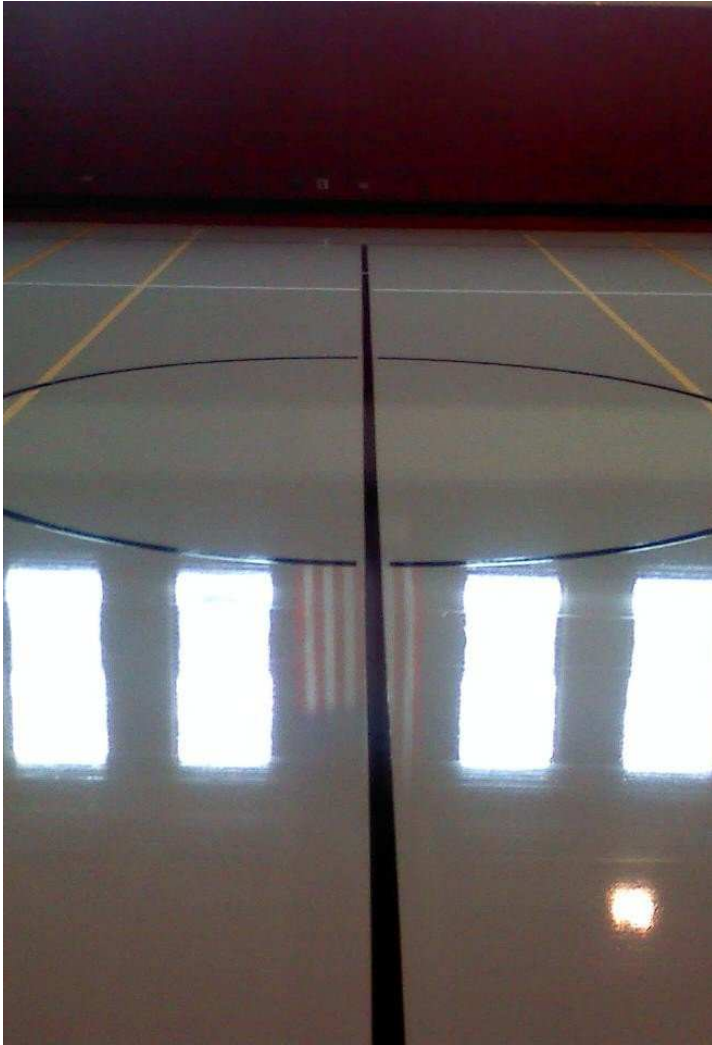
Western Springs Rec Center - Western Springs, IL
The GlossTek was applied to the rec centers sports floor.



Nazareth High School - La Grange, IL
The VersaTek Clear applied to the wood gymnasium floor.



St. Francis Elementary School - La Grange Park, IL
The GlossTek Fast Dry was applied to the wood gymnasium floor.



Graves Elementary School - Summit, IL

The VersaTek Gray with VersaTek in various colors for game line paints plus the VersaTek Clear top coat was applied to the poured urethane gymnasium floor.



Before



Before



After



After

School Gymnasium - New Jersey

The VersaTek Gray with VersaTek Colors for game line paints with a top coat of the VersaTek Clear.

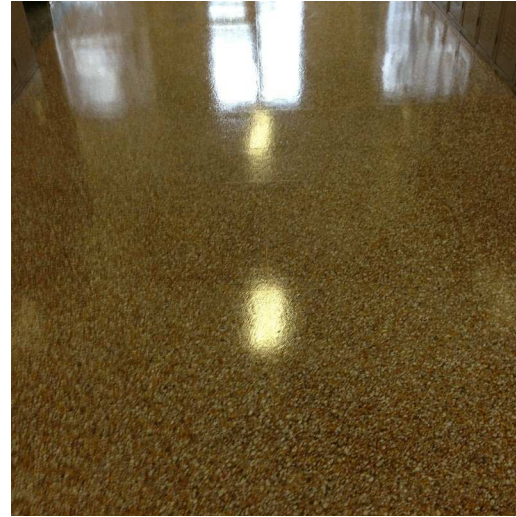


High School - United Kingdom

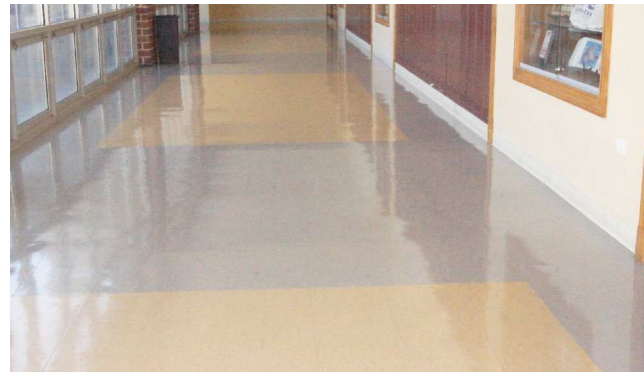
The GlossTek was applied to the wooden floor in a high school in the United Kingdom.



Wabash College - Crawfordsville, IN
The GlossTek Fast Dry was applied to their Terrazzo floor.



Powell Elementary School - Washington, DC
The VersaTek-100 Clear was applied to their Terrazzo floors.



Nazareth High School - La Grange, IL
The GlossTek products applied to various VCT floors.

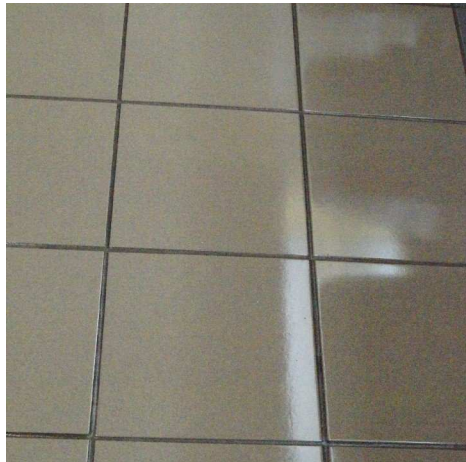
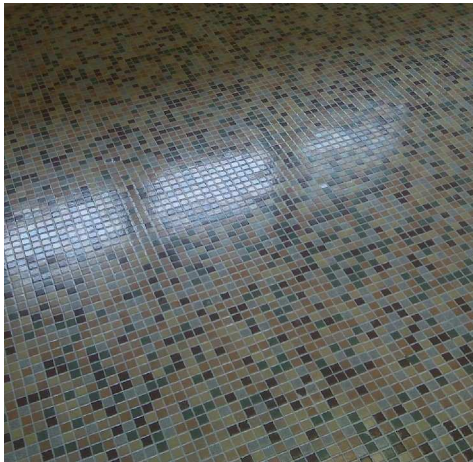
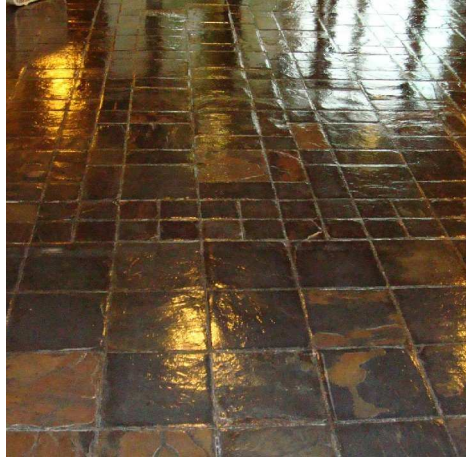


St. Francis Elementary School - La Grange Park, IL
The GlossTek Fast Dry was applied to VCT classrooms.



High School Restroom - Chicago, IL

The GlossTek Fast Dry with Adhesion Plus was applied to the ceramic floor of the restroom. Prior to application the grout was repainted and then the GlossTek Fast Dry sealed in the tile. The after picture was taken 7 months after the application.



Various Stone Surfaces

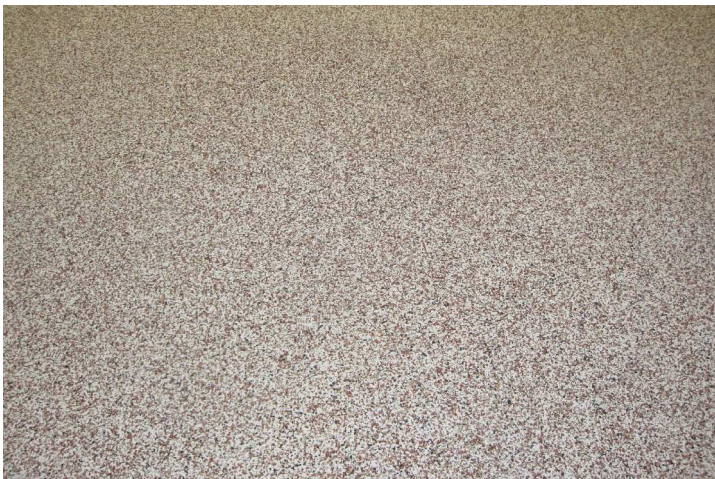
GlossTek with Adhesion Plus applied to various types of ceramic, slate, porcelain and slate surfaces. The GlossTek seals the grout, preventing the grout from discoloring and absorbing odor causing materials.



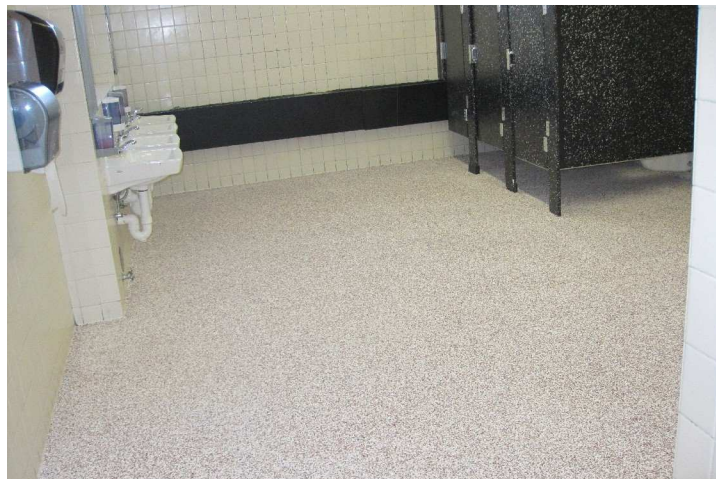
Step 1: Apply the HP-330 on top of the Ceramic to even out the floor.



Another picture of after Step 1.



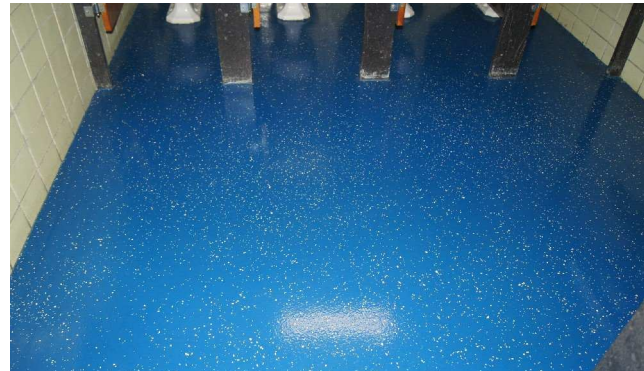
Step 2: Full broadcast of vinyl flakes.



Step 3: Application of the VersaTek Clear.

High School - New Jersey

The bathroom had very old and outdated ceramic tile. This application provided the school with a new look without significant costs.



St. Francis Elementary School - La Grange Park, IL
The VersaTek Blue & Green with vinyl flakes were applied to an old Terrazzo floor.



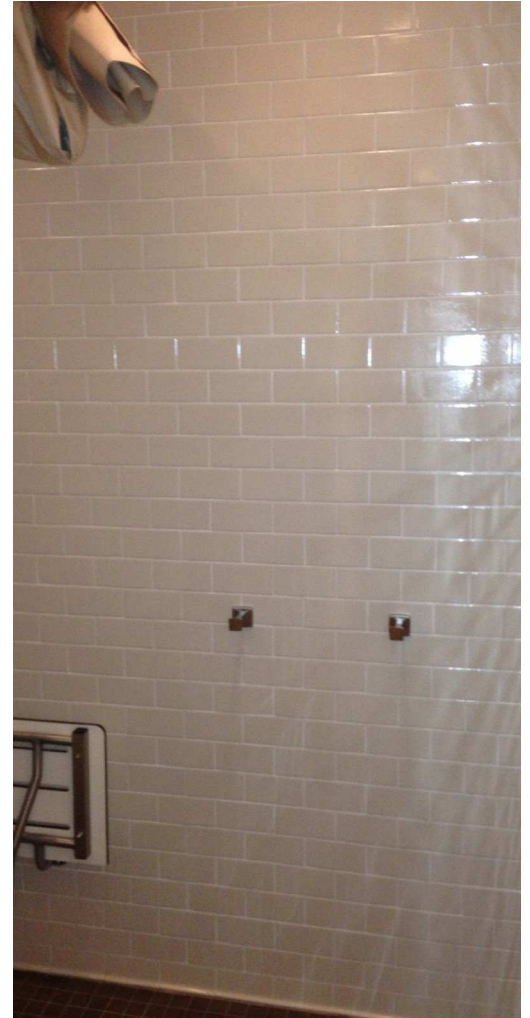
Before



PPG Distribution Center - Batavia, IL
The GlossTek Fast Dry was applied to VCT floors of the distribution center.



Carter Powersports - Las Vegas, NV
The GlossTek was applied to the rubber showroom floor.



T. Rowe Price - Baltimore, MD

The SatinTek Clear was applied to the ceramic tile floor and the VersaTek Clear was applied to the ceramic walls.



T. Rowe Price - Baltimore, MD

The GlossTek Fast Dry was applied to the Terrazzo floor (bottom left picture). The SatinTek Clear was applied to the two ceramic restroom floors (top left and bottom right). The SatinTek Clear with GripLok was applied to the quarry tile in the kitchen (top right).



Before Application

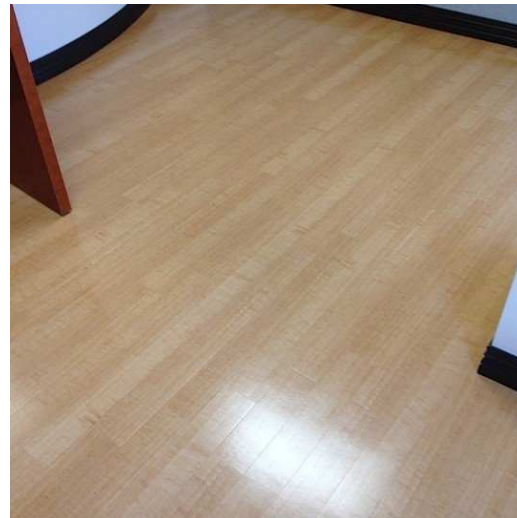
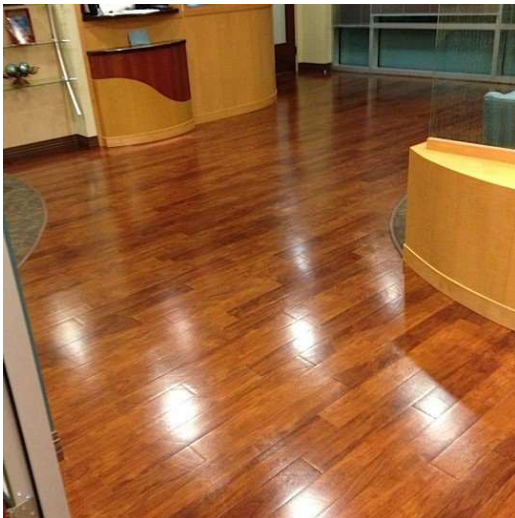


Skilled Nursing Home Kitchen Restoration - New Jersey

The VersaTek Gray was applied to a bare concrete floor with vinyl flakes significantly improving the quality and appearance.

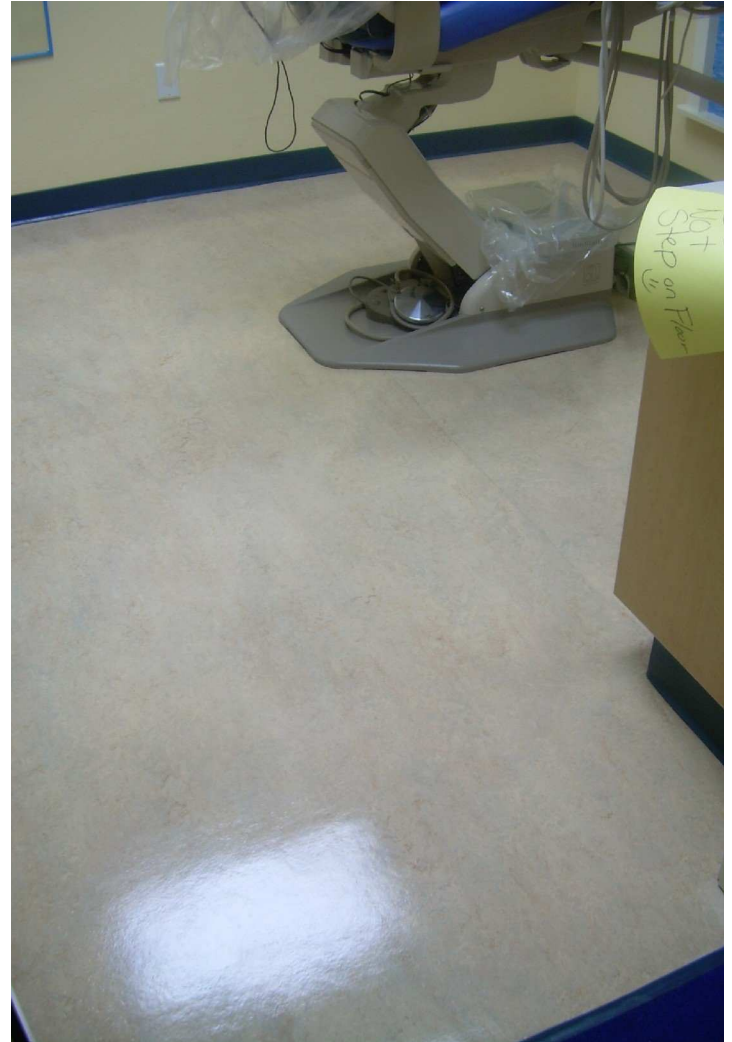


Rouge Valley Manor Retirement Center - Medford, OR
The GlossTek was applied to their Terrazzo floors.



Doctor's Office - Norfolk, VA

The SatinTek Clear was applied to the vinyl plank and VCT floors at this doctor's office.



Providence Healthcare - Portland, OR

The GlossTek Fast Dry is applied to VCT and Vinyl Sheeting throughout the hospital.



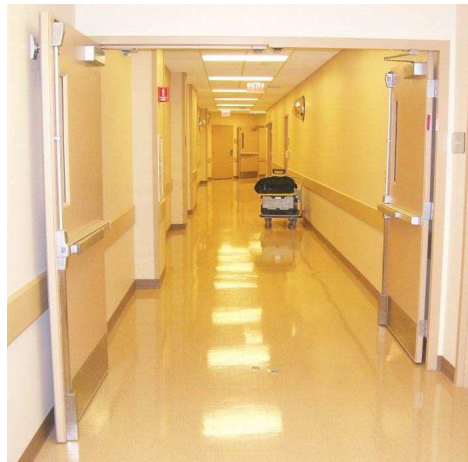
Alexian Brothers Healthcare - Elk Grove Village, IL

The GlossTek Fast Dry has been applied to the entire hospital on vinyl sheeting, VCT, Terrazzo and other flooring substrates.



Rush Copley Hospital - Aurora, IL
The GlossTek Fast Dry plus MB was applied to synthetic wood planks.

JFB Hart Coatings, Inc. - Ultra Durable Floor Care



The GlossTek products have been applied to various healthcare facilities around the country.

Specialty Products & OEM Applications

Specialty Products & OEM Applications include all applications where a customer sells a complete system or finished product that includes JFB Hart's products as part of the final product. As an OEM example, a furniture manufacturer may apply JFB Hart products to its furniture during manufacturing prior to distribution.

The performance attributes of JFB Hart products (e.g., extreme hardness, UV resistance, flexibility, gouge/scratch resistance, antimicrobial protection, etc.) provide competitive differentiation and add incremental value to the manufacturer's products. In addition, JFB Hart's products are used for specialty applications such as dry erase or anti-graffiti systems.



Office Furniture

JFB Hart's Industrial Maintenance products, HP-105 and HP-300, are being used to coat office furniture to provide outstanding performance characteristics, including increased hardness and durability, dry erase and anti-graffiti properties, that will last for years.



Hospital Bed Refurbishment

A Florida company is using JFB Hart's Industrial Maintenance product, the HP-105, to refurbish hospital beds for various healthcare facilities.



Luxury Restaurants in Chicago, IL

The HP-105 Clear was applied to the stone bartop and structure of a high-end luxury restaurant.



Bar & Countertops

JFB Hart's Industrial Maintenance products, HP-330, HP-105 and HP-300, are being used as the top coat for all types of bar and countertops.



Peapod Corporate Office - Chicago, IL

The HP-105 White was applied to walls and tables at Peapod's corporate office to provide dry erase characteristics.



The HP-300 Satin Clear was applied as the topcoat to the framed picture as well as the topcoat to the red wall.





JFB Hart Coatings, Inc.
10210 Werch Drive - Suite 203
Woodridge, Illinois 60517
Office: (630) 633-6228
Fax: (630) 633-6238
www.jfbhartcoatings.com